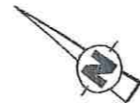


CONTRAINTES

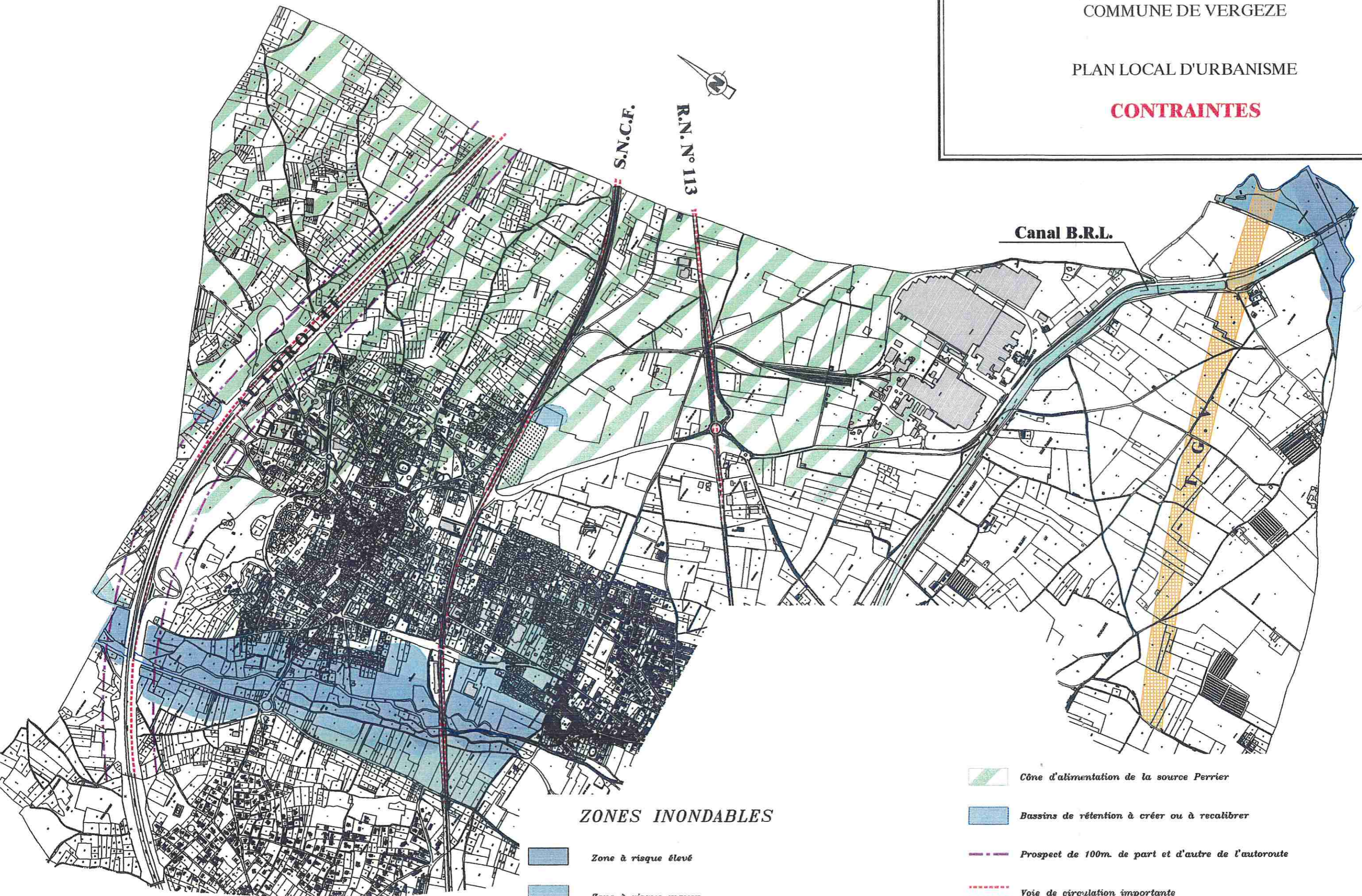


S.N.C.F.




R.N. N° 113






Canal B.R.L.

T.C.V.



ZONES INONDABLES

-  Zone à risque élevé
-  Zone à risque moyen
-  Zone à risque faible

-  Cône d'alimentation de la source Perrier
-  Bassins de rétention à créer ou à recalibrer
-  Prospect de 100m. de part et d'autre de l'autoroute
-  Voie de circulation importante
-  Emplacement réservé pour TGV